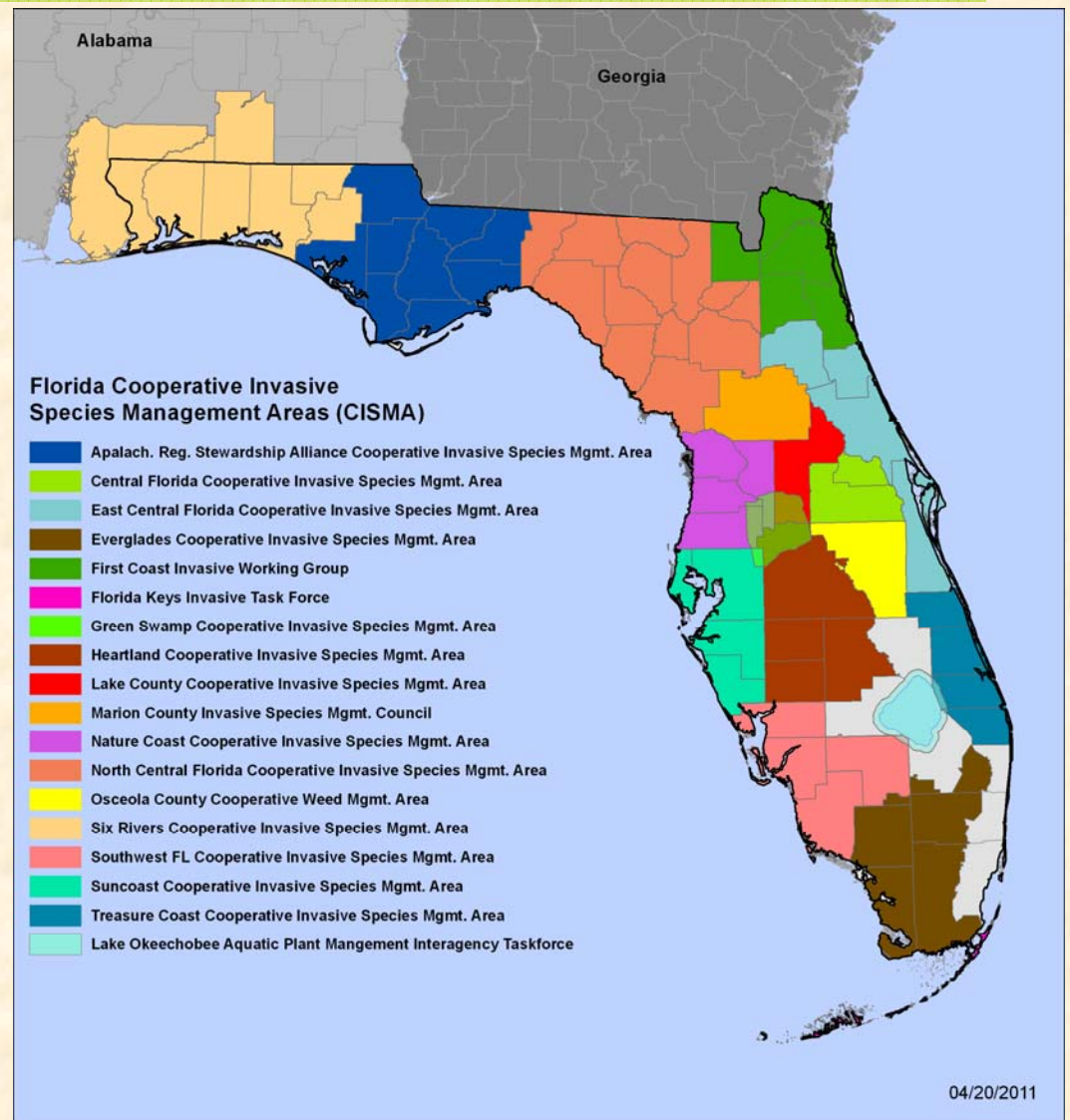


CISMA Call Agenda

- Statewide map Update
- CISMA panel discussion on FLEPPC symposium
- CISMA workshop at FNPS conference

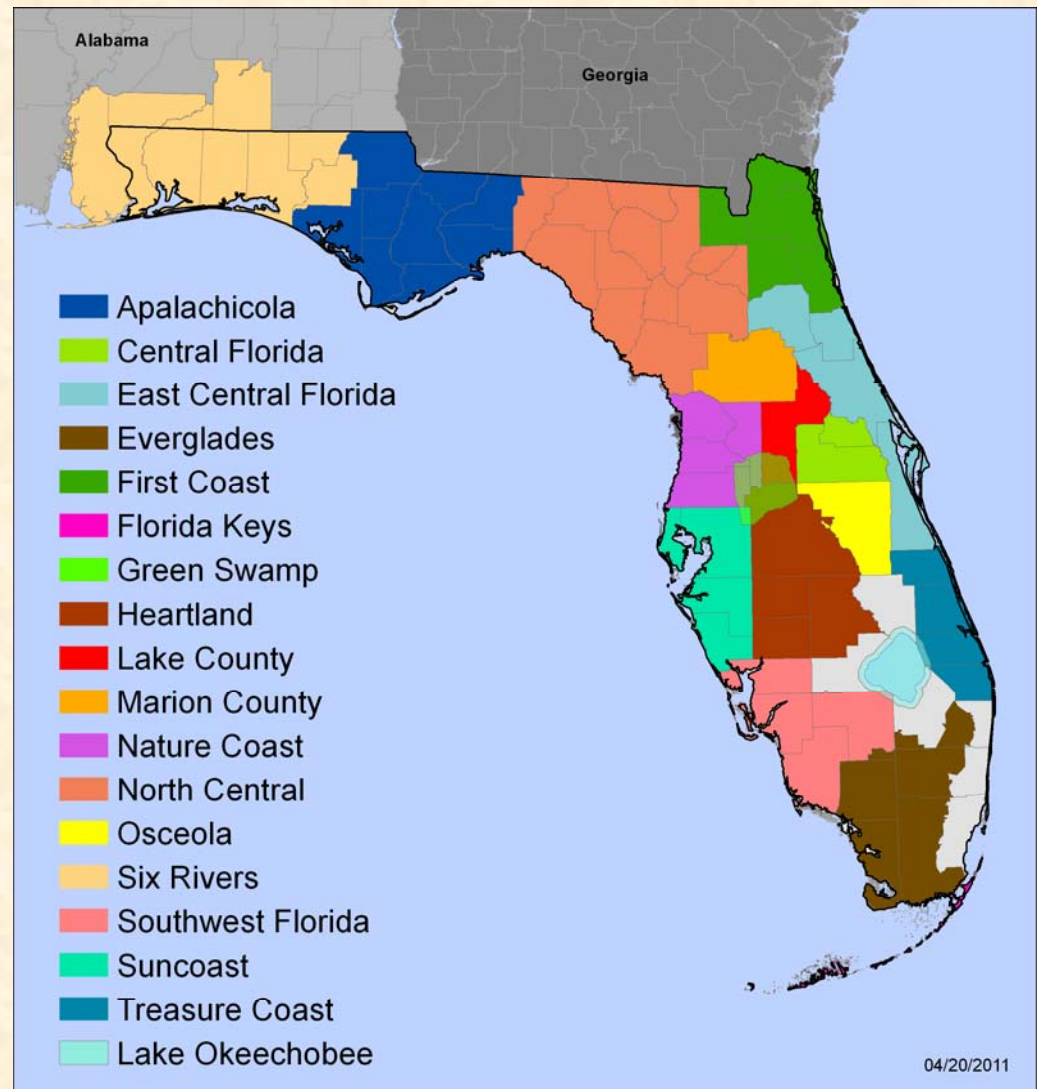


Florida Invasive Species Partnership

- 18 CISMAs in Florida
- 93.4% of Florida is covered by a CISMA!
- 65 of Florida's 67 counties are either partially or wholly included in a CISMA

4 "New" CISMAs added to the statewide map:

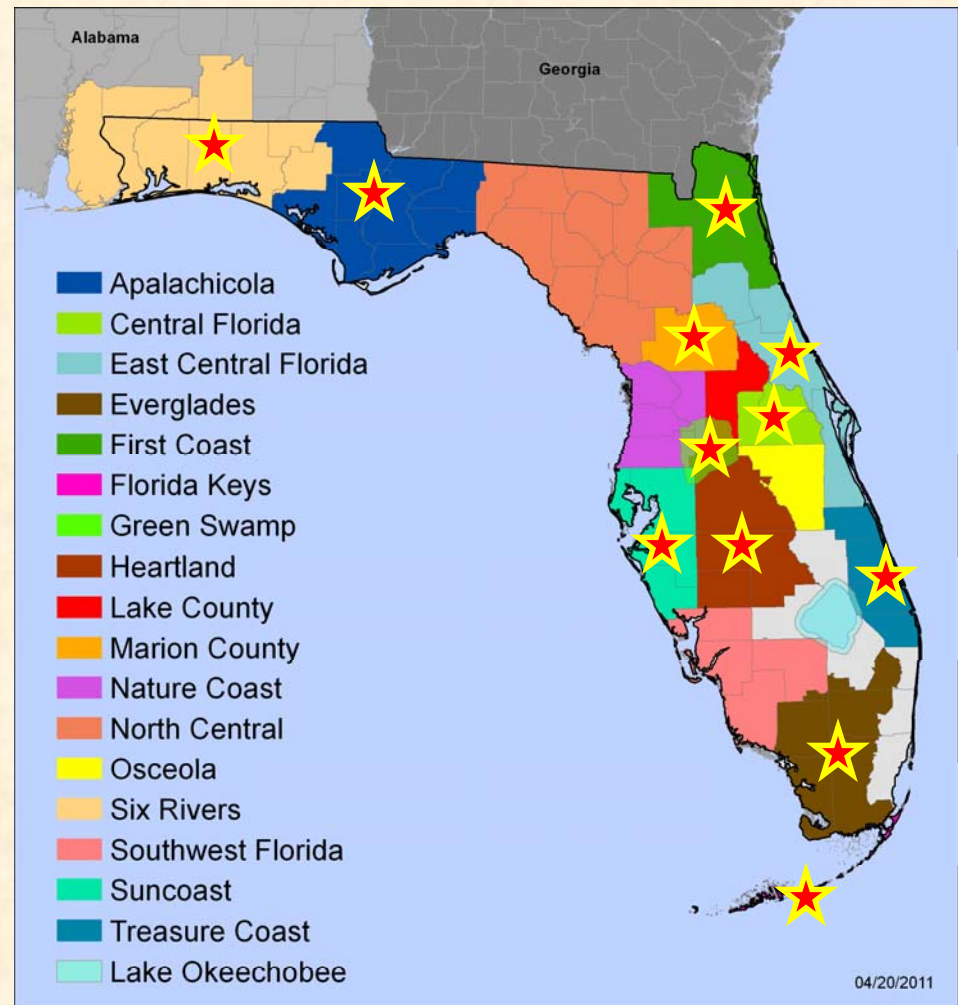
- North Central Florida CISMA (includes former Bradford Co. CWMA and Alachua Co. CISMA)
- Suncoast CISMA
- Nature Coast CISMA
- Lake Okeechobee Aquatic Plant Interagency Task Force (has actually been around a long time – check them out at www.Floridainvasives.org/Okeechobee)



FLEPPC/CISMA panel discussion

Logistics

- Wednesday, May 18 from 10:20am to noon
- 12 CISMAs have confirmed participation – shout out: anyone else planning on coming?
- Please stay after panel discussion for networking lunch and chance to celebrate – either bring your own lunch or register for lunch through FLEPPC online registration (\$14.50)



Agenda/Topics for Panels Discussion

FLEPPC Abstract – “members of the CISMAs in Florida will come together to present the results of their partnerships and share experiences. There will be a facilitated discussion following and audience participated is encourage.”

Agenda (10:20am to Noon)

- 5 minutes - intro of FISP and CISMA (mainly structure) – Erin and Kris
- 10-15 minutes - Round the table – introduction of CISMA lead(s) and where there CISMA is located – all CISMA leads
- 1 hour and 20 minutes – CISMA discuss 2+ main issues (and which of those 2 is most important) – all CISMA leads



Past panel discussions

2009

1. Innovative approaches, ideas/"wheels" that you've borrowed/stolen from other efforts
2. What are some strategies/approaches that you've developed that you'd like to brag on?
3. Has working with other partners increased your effectiveness and/or decreased costs?
4. Examples of how you've pooled your time, talent and resources with neighbors?
5. What are some lessons you have learned from no immediate success on a task or approach?
6. Have you been successful recruiting people?
7. How have you kept people?
8. What is needed to make your group more successful?

2010

1. Discuss your CISMA's efforts working on private lands and/or w/private landowners.
2. How have you made (or plan to make) your CISMA's structure stronger (e.g. steering committees, sub committees, co-chairs, etc.)? Or is your original/existing structure working well?
3. Has your CISMA developed a work plan or strategic plan to help guide its efforts?
4. Discuss your strategies for effectively coordinating efforts such as mapping/treatment/follow-up across property lines.
5. Do you feel that your CISMA adequately involves or represents the majority of landowners and natural resource managers in your area?

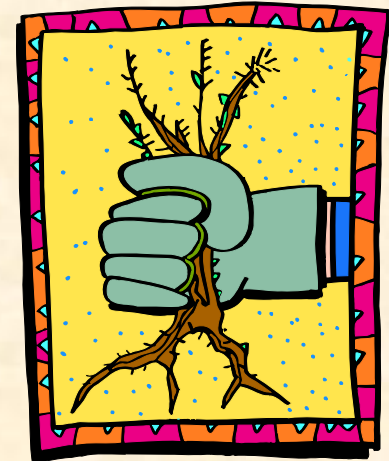
March 2011 Call – focused on CISMA structure – should we go deeper?

SWITCH TO WORD DOCUMENT: April 26 Discussion FLEPPC CISMA Panel

Florida Native Plant Society (FNPS) - Active detection networks – Invasive Plants know NO Boundaries, Do You?

Friday May 20 from 1:15pm to 2:45pm

Whether in your yard, natural area or restoration site, invasive species know no boundaries, do you? This workshop will focus on local efforts to battle the threat of invasive plants where you live, work and recreate. Representatives from the Florida Invasive Species Partnership (FISP) and many of the 16 Cooperative Invasive Species Management Area (CISMAs) in Florida will help train you to identify the biggest threats in your area. They will also enlist and train you in the effort to detect and report these insidious invaders so they can be stopped in their tracks.



FNPS Workshop

Timeline (1.5 hours total)

- **Presentation: 10 minutes.** CISMAs and the importance of early detection/active detection networks. (Erin Myers or Kristina Serbesoff-King)
- **Break out groups: 25 minutes.** Meet your CISMA with hands on identification of their top 5 worst invaders/early detection plants. (Sherry Williams and other CISMA leads)
- **Presentation: 10 minutes.** Entering records into EDDMapS (www.EDDMapS.org/Florida) (Kristina Serbesoff-King)
- **Practical in groups: 20 minutes.** Plant Identification – reach into a mystery bag (one at each CISMA station) and grab a plant. Each plant will have a tag that gives them the info on where it was found, lat longs or address and habitat, approx infestation size, etc. Ideally each group will grab and ID three plants using resources we have in the room (internet, books, hand outs, etc) to ID the plants (CISMA leads to assist with identification tips)
- **Practical in groups: 20 minutes.** Enter plant records from mystery bag practical into EDDMapS. Each group will get a chance to enter a record into EDDMapS. (FISP and CISMA members to assist with database entry)
- **5 minutes, wrap up and give our prizes (all)**

FNPS Workshop – To Do

CISMAs TO DO:

- By May 6 - Email a list of 5 priority plants for your CISMA – email to Kris Serbesoff-King
- By May 6 - Email color photos of these plants and several locations for where you would find it in your CISMA (for our virtual hike) – need lat/longs or address, habitat, approx infestation size – email to Kris Serbesoff-King (she will make mystery plant sheets w/photo and information for the grab bags)
- May 20 - Bring real plants if possible
- May 20 - Bring any outreach materials or fact sheets that you have so that we can give them to FNPS members to take home with them
- May 20 - FISP will bring:
 - IveGot1 cards (wallet cards)
 - FISP fact sheet
 - Weeds you should get to Know
 - CISMA contact handout (w/map and counties) – Erin will make

Florida Cooperative Invasive Species Management Area (CISMA) Monthly Call

– Hosted by the Florida Invasive Species Partnership (FISP)

participation is voluntary, we promise it will only last 1 hour, and we can guarantee that you will enjoy the conversations

4th Wednesday of every month at 1:30pm

May Call: CANCELLED

**See you at FLEPPC/FNPS and we will resume this call on
June 22, 2011 at 1:30pm**

Florida Invasive Species Partnership (www.FloridaInvasives.org)