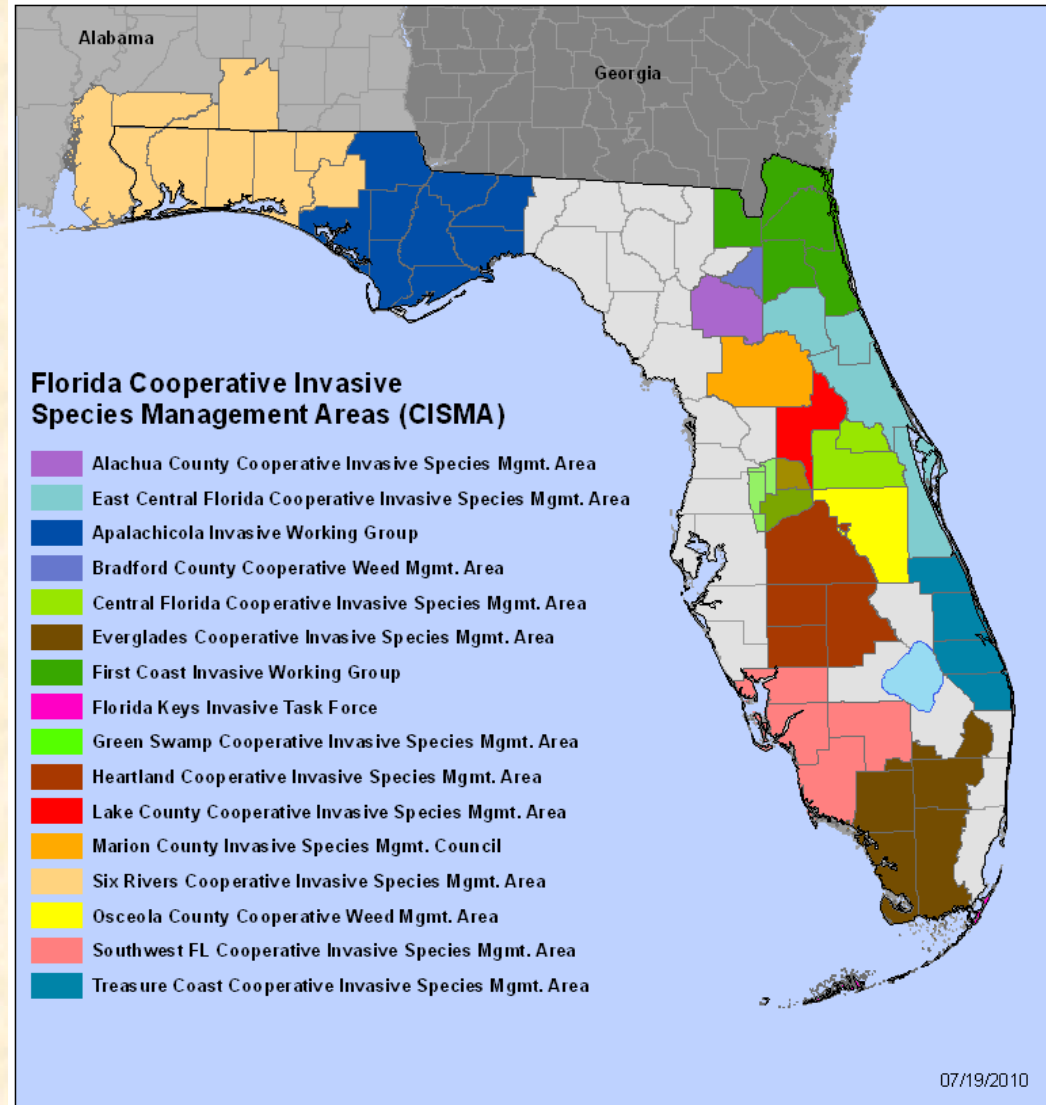


# CISMA Call Agenda

- FISP Update - Erin
- CISMA NISAW Updates - All
- River to River CWMA presentation – Chris Evans



# Florida Invasive Species Partnership

- Update of last meeting - February 8 and 9 in Tampa area

- West Central Florida CISMA kick off

On Feb. 9<sup>th</sup> from 9:30am to noon FISP held a session on “what is a CISMA” and then facilitated a discussion on possibilities of starting a CISMA, or two, in West Central Florida area.

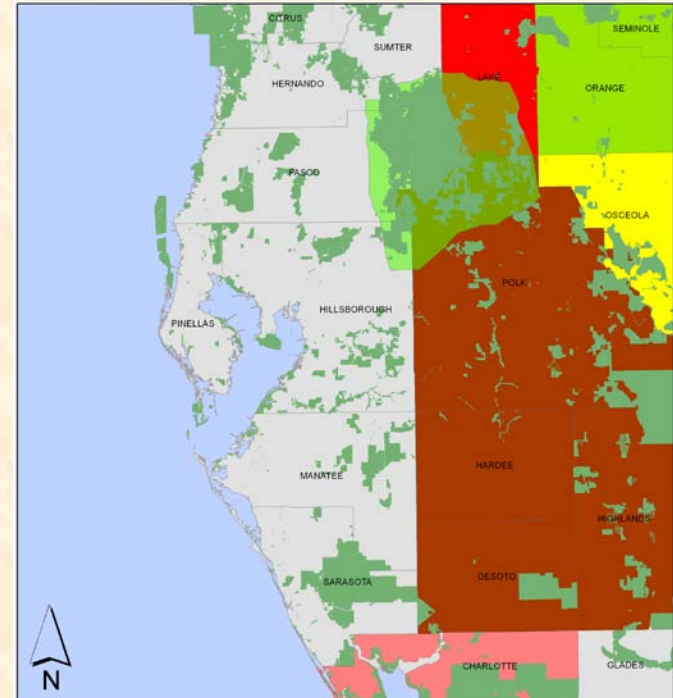
Lots of great people, lots of great energy!

- FISP will in D.C. for NISAW!

There will be a panel discussion held in D.C. on March 1<sup>st</sup> from 3:00 – 4:30 pm that will be broadcast via WebEx. Information on how to join will be sent out via the FLORIDACISMAS listserv

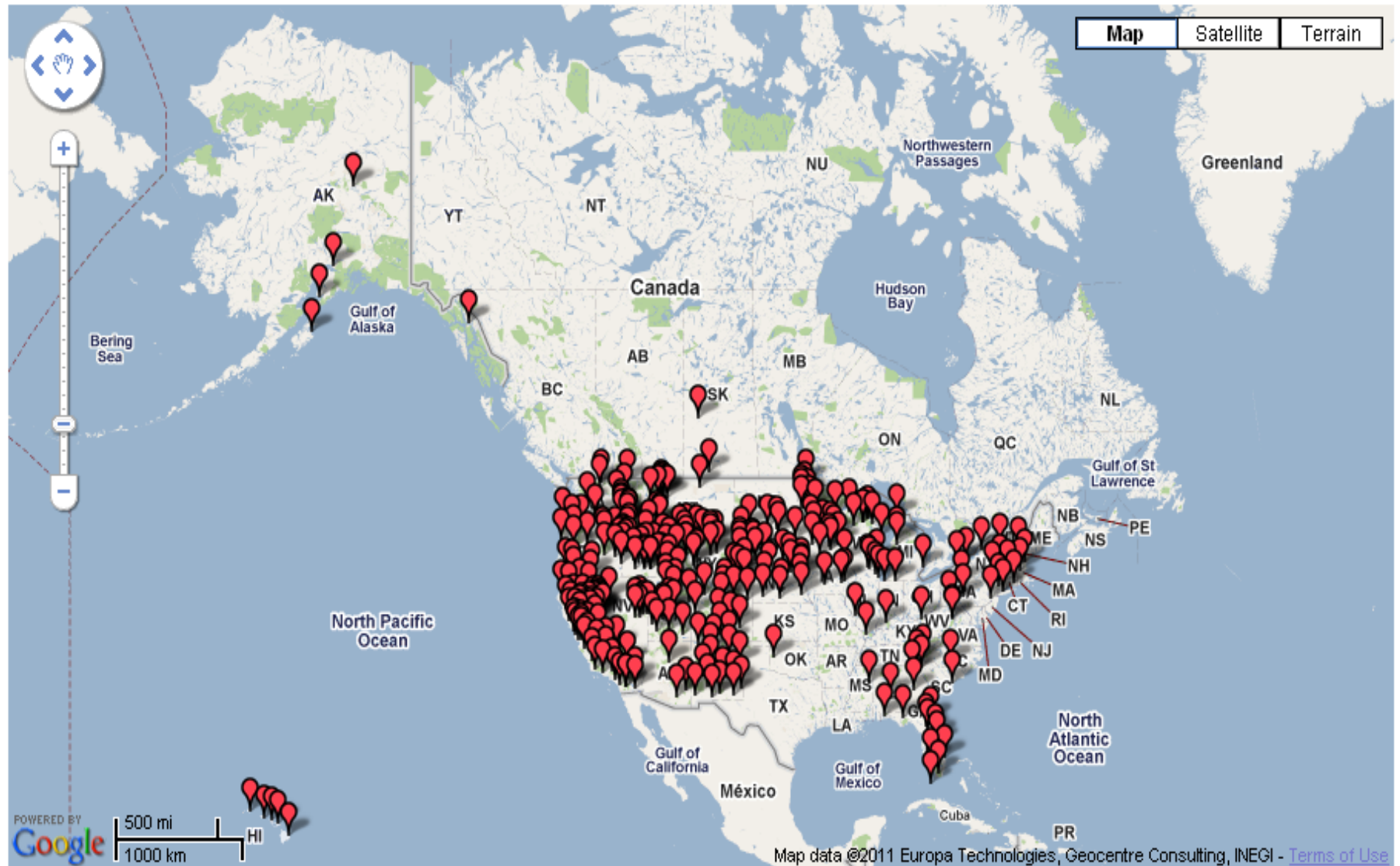
“Strengthening Grassroots Partnerships - CISMA/PRISM/CWMA”

This will be a great opportunity to learn about CWMA and PRISM (Partnerships for Regional Invasive Species Management) in the west, midwest and northeast and how we can better interact at a national level (see map next slide)

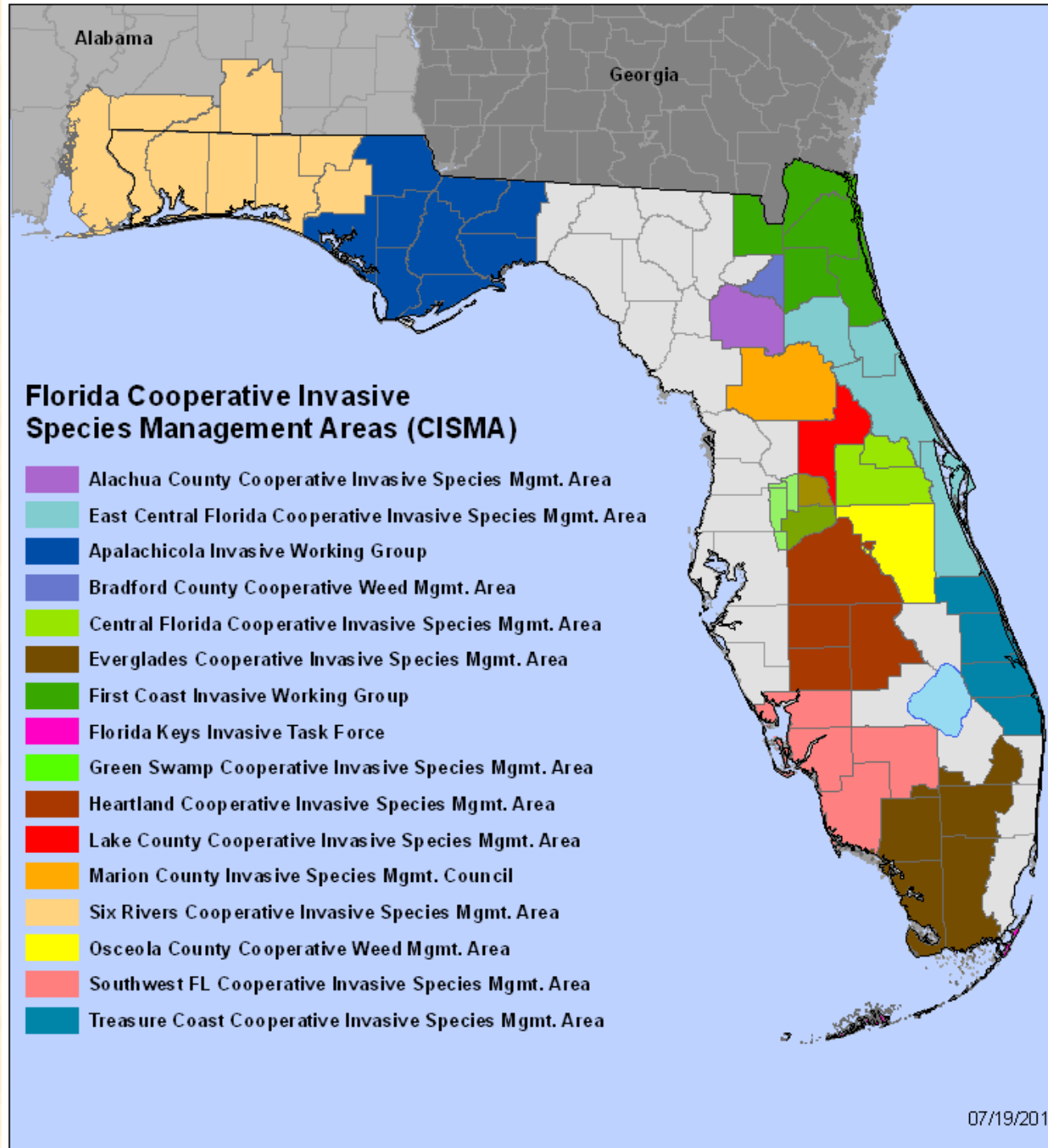


## National CWMA Map

[Click Here to add your CWMA to the map.](#) To update your information or to add a list of CWMA's for your state, e-mail us at: [cbarqero@uga.edu](mailto:cbarqero@uga.edu)



# Update Round Table



# Florida Cooperative Invasive Species Management Area (CISMA) Monthly Call

– Hosted by the Florida Invasive Species Partnership (FISP)

*participation is voluntary, we promise it will only last 1 hour, and we can guarantee that you will enjoy the conversations*

4th Wednesday of every month at 1:30pm

email [kserbesoffking@tnc.org](mailto:kserbesoffking@tnc.org) for more information or go to [floridainvasives.org](http://floridainvasives.org) to join up for list serve announcements

Participate online and/or

go to: [nethope.webex.com](http://nethope.webex.com)

Enter meeting number: 829 485 191

Enter meeting password: invasive1

Participate by phone

US Toll-free: 1-866-699-3239

Participant Passcode: 20097469

Florida Invasive Species Partnership ([www.FloridaInvasives.org](http://www.FloridaInvasives.org))