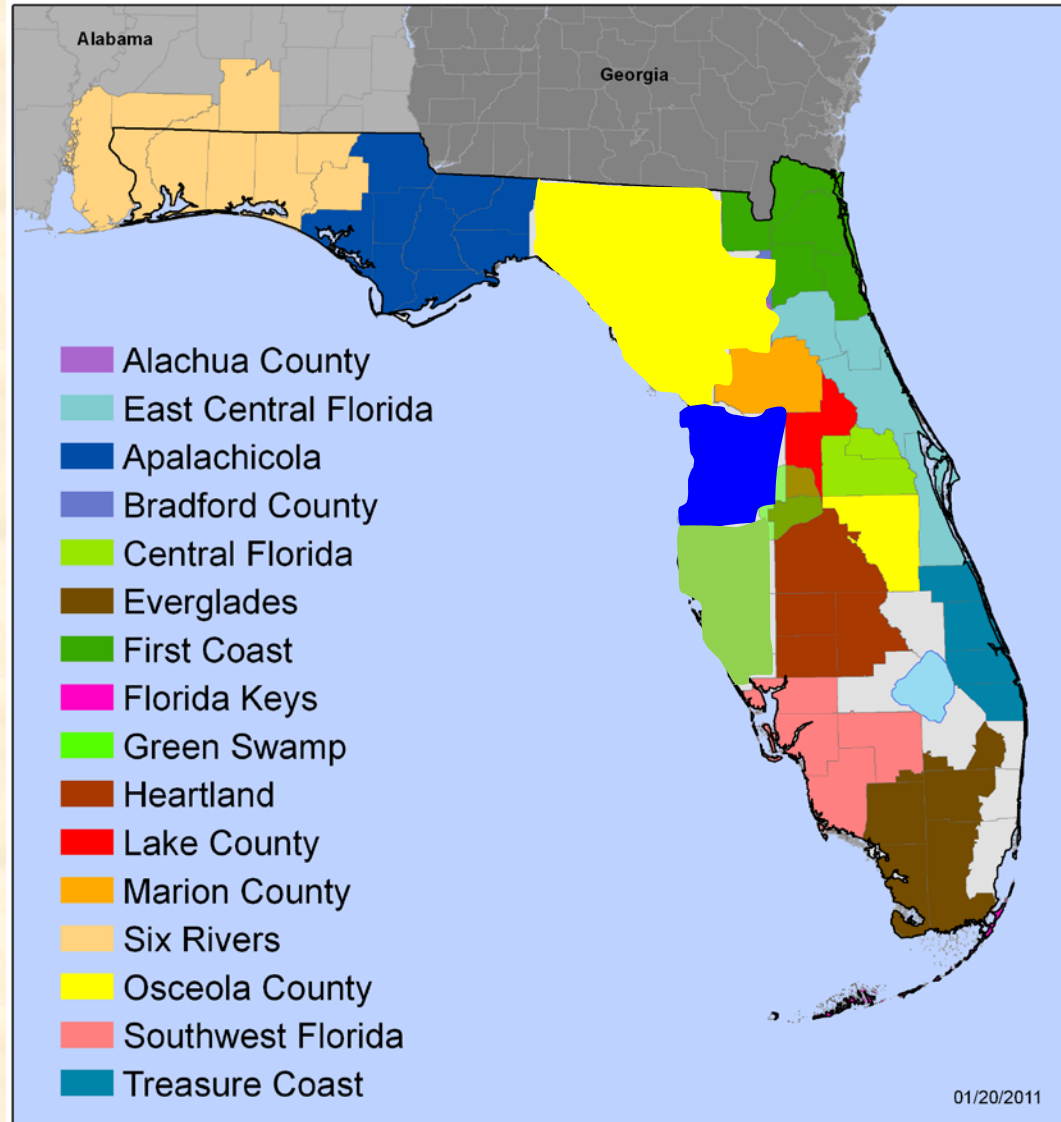


# CISMA Call Agenda

- FISP Update - Kris
- CISMA structure discussion
- East Central Florida NISAW workdays



# Florida Invasive Species Partnership

FISP was in D.C. for NISAW! -

## “Strengthening Grassroots Partnerships - CISMA/PRISM/CWMA”

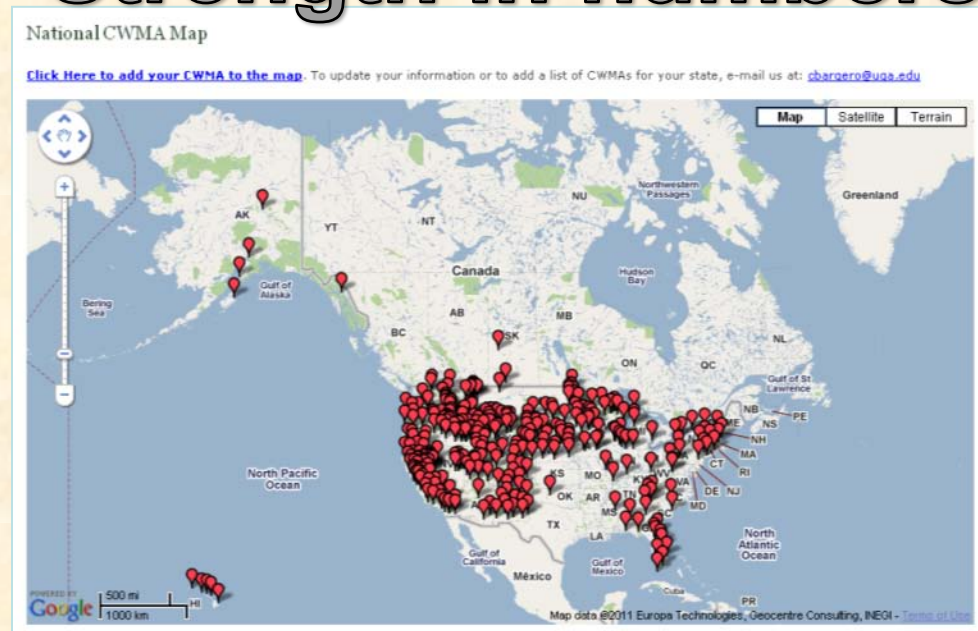
The panelists for this session represented:

- Florida Cooperative Invasive Species Management Areas (CISMA),
- New York Partnership for Regional Invasive Species Management (PRISM),
- Oregon Cooperative Weed Management Area (CWMA)
- Midwest Invasive Plant Network (MIPN)

### Top 3 ideas for future conversations:

1. Develop a better communication network for CWMA's that could contribute to their effectiveness.
2. Options of how to support paid coordinator positions for statewide/regional/local CWMA's.
3. Involve CISMA/CWMA/PRISM in Early Detection and Rapid Response (EDRR) active detection networks

## Strength in numbers



# Treasure Coast CISMA

- 1. How many meetings do you have each year (e.g. monthly, quarterly, 2x year) Quarterly**
  - Are these meetings with entire membership or do you also have separate steering committee meetings on some routine basis?**

The quarterly meeting is steering committee, there are other meetings and subcommittee meetings called as needed.
- 2. Do you have a chair, co-chairs? Co chairs**
- 3. Do you have a steering committee? Yes, but informally set up.**
- 4. Do you have sub-committees – and what are they if you do? Yes,**

Invasive animal, EDRR, Plant control, Private lands (new), Outreach and Education Subcommittees. These are also informal and new, most with a chair or co-chairs and participants. Cooperative workday subcommittee as well, 3 co chairs.
- 5. Any other nugget of info you would like to share.** Applying, receiving and administering a CISMA financial award was very helpful to develop structure, sustain the CISMA through slow times, and keeping CISMA activities moving forward always.

# Apalachicola Invasive Working Group (AIWG)

- 1. How many meetings do you have each year (e.g. monthly, quarterly, 2x year)** Semiannual meetings every Spring and Fall with the entire membership
  - Are these meetings w. entire membership or do you also have separate steering committee meetings on some routine basis**
    - Steering committee cooperates via conference call & email
- 2. Do you have a chair, co-chairs?** Chair
- 3. Do you have a steering committee?**
  - Steering Committee consists of TNC and 5 others representing: FWC, UF IFAS, FNAI, NRCS, Tyndall AFB
- 4. Do you have sub-committees – and what are they if you do?** No sub-committees yet
- 5. Any other nugget of info you would like to share.** Think big, but set realistic goals because long-term momentum is built through achievement

# Central Florida CISMA

- 1. How many meetings do you have each year (e.g. monthly, quarterly, 2x year) Semiannual meetings with the entire membership**
  - Are these meetings w. entire membership or do you also have separate steering committee meetings on some routine basis**
    - Steering committee meets once per year
- 2. Do you have a chair, co-chairs?** No. Have a lead who calls meetings/sends emails
- 3. Do you have a steering committee?**
  - yes
- 4. Do you have sub-committees – and what are they if you do?**
  - No
- 5. Any other nugget of info you would like to share.** Be persistent and leave your ego at the door.

# Green Swamp CISMA

- 1. How many meetings do you have each year (e.g. monthly, quarterly, 2x year)** The Green Swamp CISMA has had 1-2 meetings per year and all participants have met.
- 2. Do you have a chair, co-chairs?** Co-Chairs
- 3. Do you have a steering committee?**
  - No
- 4. Do you have sub-committees – and what are they if you do?** No sub-committees at this point
- 5. Any other nugget of info you would like to share.** We are pretty much a one issue CISMA focused on keeping OWF out of the Green Swamp Ecosystem by establishing a early detection rapid response effort.

# Marion County ISMC

- 1. How many meetings do you have each year (e.g. monthly, quarterly, 2x year)** Varies. All participants invited
- 2. Do you have a chair, co-chairs?** Chair
- 3. Do you have a steering committee?**
  - Unofficially
- 4. Do you have sub-committees – and what are they if you do?** Yes, in varying embryonic stages: Invasive Animals, Landowner Assistance, Coordination across Property Lines, Community Events.

# Everglades Cooperative Invasive Species Management Area

- 1. How many meetings do you have each year (e.g. monthly, quarterly, 2x year) 4x a year, plus Everglades Invasive Species Summit and various other sub committee meetings**
  - Are these meetings w. entire membership or do you also have separate steering committee meetings on some routine basis**
  - 4x meetings listed above are Steering committee of sub committee chairs and other interested persons
- 2. Do you have a chair, co-chairs? Co chairs**
- 3. Do you have a steering committee? Yes**
- 4. Do you have sub-committees – and what are they if you do? Yes**
  - Outreach
  - Rapid Response
  - Operations
  - Research
- 5. Any other nugget of info you would like to share. Be action oriented. Find ways to get around obstacles. Develop communication and synergy.**

# East Central CISMA

- 1. How many meetings do you have each year (e.g. monthly, quarterly, 2x year)** Quarterly-ish. We are still working on the best fit for our CISMA and we are still very new. Many members would like to have meetings every 2 months but it has been a little too difficult to keep this pace with full-time jobs...
  - Are these meetings w. entire membership or do you also have separate steering committee meetings on some routine basis** - Invite the entire membership at this point and people attend as schedules allow
- 2. Do you have a chair, co-chairs?** Co-Chairs- necessary!
- 3. Do you have a steering committee?** No steering committee- we voted “against” this with the idea to be all inclusive with public/ private sector and hope to draw in a larger membership and buy-in to the CISMA
- 4. Do you have sub-committees – and what are they if you do?** Yes- We have the 5 year strategic plan committee, web-site committee and we are looking to develop a few other committees in the very near future.
- 5. Any other nugget of info you would like to share.** If someone offers to help- take it!

# Heartland CISMA

**1. How many meetings do you have each year (e.g. monthly, quarterly, 2x year)**

General membership meetings currently 2-3x/yr & ad hoc committees meet as needed (e.g. priority species committee met 1x, strategic plan committee met 1x, annual work plan committee met 1x, aerial survey committee has met 2x)- will likely move to:

- Spring & fall ID/treatment workshops
- Spring invasive species workshop w/various speakers
- Winter & summer planning meetings following LWREWG meetings
- Still ad hoc committee meetings as needed

**2. Do you have a chair, co-chairs? Chair**

**3. Do you have a steering committee? Yes (6 members = TNC x 3, Polk County, FPS, DoD)**

**4. Do you have sub-committees – and what are they if you do? Yes:**

Prevention: 2 leads:TNC

EDRR/control: 9 members: Polk Co., FPS, TNC, FDOF, DoD, Bok Towers

Aerial survey: 4 members: FDOF, TNC, DoD, FWC

Website: 3 members: FDOF, FPS, TNC

**5. Any other nugget of info you would like to share. Have a reason other than just planning for people to come to meetings (training, workshop, etc.)**

# First Coast Invasive Species Working Group

- 1. How many meetings do you have each year (e.g. monthly, quarterly, 2x year)**
  - FCIWG meets quarterly with the entire membership. At our last meeting, we discussed the possibility of having subcommittee meetings during the lunch breaks (working lunches). Our steering committee has not met since the strategic plan was completed (more than a year).
- 2. Do you have a chair, co-chairs?**
  - FCIWG has two co-chairs.
- 3. Do you have a steering committee?**
  - Yes--it was formed to create the strategic plan (1.5-2 years ago?)
- 4. Do you have sub-committees – and what are they if you do?**
  - Yes--we have subcommittees for marine invasives, prevention, education/outreach, volunteer restoration, private lands

# Six Rivers CISMA

- 1. How many meetings do you have each year (e.g. monthly, quarterly, 2x year)** Shoot for quarterly, or 3x per year. Entire membership has been invited to each so far.
- 2. Do you have a chair, co-chairs?** One chair. Co-chairs would be preferable.
- 3. Do you have a steering committee?** Yes, but the steering committee has not been active. The subcommittees do the leg work so far.
- 4. Do you have sub-committees – and what are they if you do?** We have subs for each goal in the strategic plan. The subs have been key in developing and implanting the strategic plan. We also have a “funding” sub, with the thought of looking for and finding ways of accepting funding for the CISMA. It has not been particularly active yet, but if we don’t have additional DOD funding it will be.
- 5. Any other nugget of info you would like to share.** As a new CISMA, the strategy was to reach out broadly to gain participation, find those that will be active and move the CISMA forward, have meetings with those key people to develop CISMA structure and plans, and once the 1<sup>st</sup> annual work plan is in place and the organization is ready to get work done on the ground, start reaching out again for broader participation.

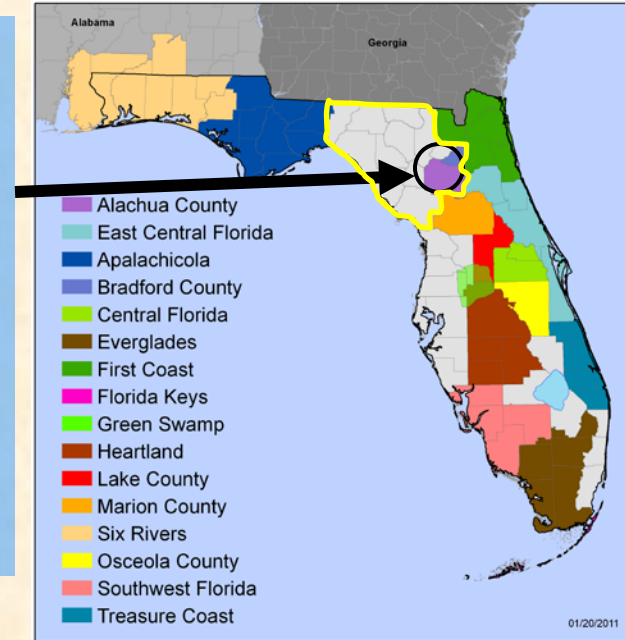
# Florida Keys Invasive Species Task Force

- 1. How many meetings do you have each year (e.g. monthly, quarterly, 2x year) -** Every other month for 3 hours, with the other every other month 3 hours being an EDRR workday.
  - Are these meetings w. entire membership or do you also have separate steering committee meetings on some routine basis**
  - Mostly entire membership of who can attend. Occasionally have separate meetings to work on a specific project.
- 2. Do you have a chair, co-chairs?** Chair.
- 3. Do you have a steering committee?** 6 person steering of our largest landowners: TNC, DoD, USFWS, FFWCC, Monroe County and FDEP State Parks.
- 4. Do you have sub-committees – and what are they if you do?** The subcommittees / and or point people are ad hoc, based on the work plan for that year.
- 5. Any other nugget of info you would like to share.** EDRR workdays get good turn out because they are new species and can be pitched as “training” events.

# Summary – Florida CISMA Structure

	Meetings per year	Chair or co-chairs	Steering Committee	Sub-committees
<b>Treasure Coast</b>	Quarterly	Co-chairs	~Yes	Yes
<b>First Coast</b>	Quarterly	Co-chairs	Yes	Yes
<b>Marion</b>	Varies	Chair	~Yes	~Yes
<b>Heartland</b>	2-3 per year	Chair	Yes	Yes
<b>Keys</b>	6x per year	Chair	Yes	~Yes
<b>Six Rivers</b>	3x per year	Chair	Yes	Yes
<b>Apalachicola</b>	Semi-annual	Chair	Yes	No
<b>Everglades</b>	Quarterly	Co-chairs	Yes	Yes
<b>Central Florida</b>	Semi-annual	None	Yes	No
<b>East Central Florida</b>	~Quarterly	Co-chairs	No	Yes
<b>Green Swamp</b>	1-2 per year	Co-chairs	No	No
<b>Most common</b>	Varies with all at least 2x year	Tied (more desire for co-chairs)	Yes	Yes – and desired

# Bradford Co. Cooperative Weed Management Area...soon to be North Central Florida CISMA



Discussion item from Paul Still -

This sounds like it would be good information for the new North Central Florida CISMA.

One topic I would be interested in is identifying agency people who could help lead a CISMA. We do not have a lot of conservation lands in many of the target counties other than Suwannee River Water Management District Lands.

# East Central Florida CISMA Workdays

**Celebration of the 2011:  
National Invasive  
Species Awareness Week**

# ECF- CISMA Workday Bicentennial Park North Ormond Beach Volusia County, FL

March 2, 2011

➤ Target Plant Species:

➤ Brazilian pepper

➤ Herbicide:

➤ Garlon 4

➤ Method:

➤ Hack and Squirt

➤ Participants:

➤ Volusia County

➤ UF Ag Center, IFAS

➤ FWC, IPMS



# ECF- CISMA Workday Bicentennial Park North Ormond Beach Volusia County, FL

March 2, 2011

The weather was perfect for a day in the field. The objective of the day was to treat Brazilian pepper trees with the “hack and squirt” method around the inside perimeter of the park near the basketball and tennis courts. This park is heavily used by Volusia County residents as observed during the workday. Park guests stopped to ask who we were and what we were doing. It was the perfect opportunity to educate the public on the ECF- CISMA and invasive species.



**Morning training session: Ed, Steve, Martin and Mike**



**Getting the job done with a smile:  
Ed, Mike and Martin**



**David Griffis is ready to kill some  
pepper trees!**

# ECF- CISMA Workday Bicentennial Park North Ormond Beach Volusia County, FL

March 2, 2011

We had great help from the Volusia County “Special Task Force”: These three individuals, Martin Moran, Steven Kulchawick and Michael Cirillo, received a hands on training, on how to properly identify Brazilian peppers, how to score the trees and apply herbicide to the tree trunks for an effective kill. David Griffiths with the University of Florida, IFAS Agricultural Extension Office provided identification techniques along with safe machete handling.

Other invasive plant species identified:

Asparagus fern

Boston fern

Bamboo



The Crew: Kelli Gladding, Edward Northey, Steven Kulchawick, Michael Cirillo, Martin Moran & David Griffis



David Griffis is scoring the tree trunks



Tag Team- David Griffis and Edward Northey

**ECF- CISMA Workday  
Brevard County EELS  
Coastal Jewel Site  
Malabar, FL**

March 3, 2011

➤ Target Plant Species:

- Chinese tallow
- Brazilian pepper
- Cogon grass

➤ Herbicide:

- Garlon 4
- Glyphosate

➤ Method:

- Hack and Squirt
- Cut stump treatment



Chinese tallow: *Sapium sebiferum*



# ECF- CISMA Workday Brevard County EELS Coastal Jewel Site Malabar, FL

March 3, 2011

## Cooperative Participants:

Brevard County, EELS  
The Nature Conservancy  
Florida Fish and Wildlife  
Department of Defense  
US Fish and Wildlife  
Pro-Tech Natural Resources

## About the Site:

The 184 acre Coastal Jewel site, owned by Brevard County and the USAF has a conservation easement on 101 acres.

**The “Mother Tallow” Tree  
Chain-sawed by Ralph Lloyd &  
Treated by Steven Troy**



Sign-in: Mike, Mark & Damion



Mable O'Quinn



Ken, Don & Mable



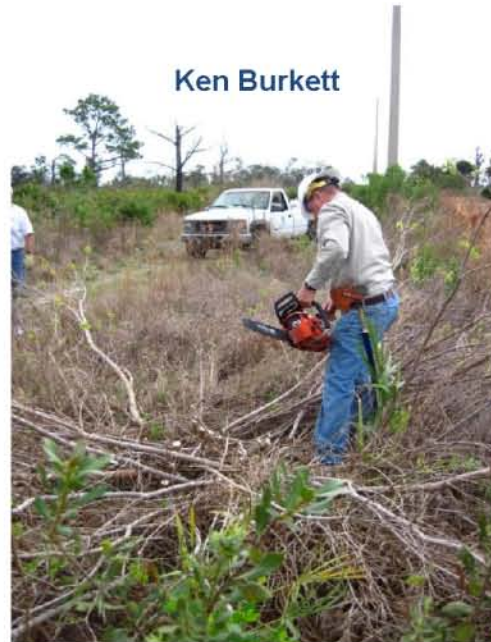
Treated Tallow stumps

# ECF- CISMA Workday Brevard County EELS Coastal Jewel Site Malabar, FL

March 3, 2011

## Project:

The exotics are Cogon grass, Chinese tallow and Brazilian peppers. The trees were mid-sized that could be herbicided in place. The cogon grass is several patches no greater than about a quarter acre. There is some torpedo grass in wetland areas. The exotics are concentrated along the FPL power-line easement, which is within the conservation easement. It is a total of about 4.5 acres of exotics with about 40-50% coverage of exotics.



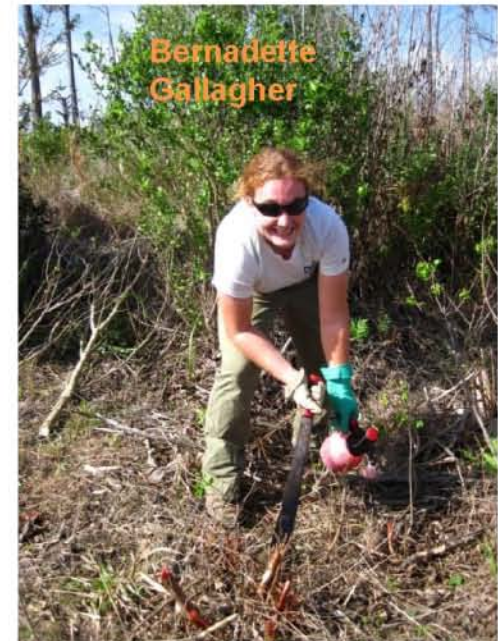
Ken Burkett



Mike Renda



Mark Mercadante



Bernadette Gallagher

# ECF- CISMA Workday Brevard County EELS Coastal Jewel Site Malabar, FL

March 3, 2011

## What makes this site special as a CISMA project:

The site is one of those lands that could more readily be “missed” during management, or it could be unclear who should manage it. A cooperative workday brings partners together to get this job done.

## Wildlife observed during workday:

Florida Scrub- Jay  
Indigo Snake

## Educational Training:

TC CISMA (Treasure Coast) partners, Mike and Bernadette, learned to recognize smaller, defoliated tallow. Tallow is an EDRR species for TC CISMA.

Mike also added this site to EddMaps for Chinese tallow.



## Protecting Habitat



# ECF- CISMA Workday Brevard County EELS Coastal Jewel Site Malabar, FL

March 3, 2011

It was a great day and we were able to treat all of the Chinese tallow along the power-line easement. Unfortunately the winds were too high and we could not treat the small patch of cogon grass and did not find the torpedo grass.

When everyone was leaving for the day, Ralph Lloyd spotted a Chinese tallow tree near a wetland and the remaining participants jumped out of their trucks and went to work. The tallow trees were beginning to rim the wetland along with Brazilian peppers starting to sprout. We treated as much as we could but this will be a great area to return to for another workday. This wetland is where the Indigo Snake was spotted as well, GREAT find Mark.

Everyone helped out and all had a great time doing so. We are looking forward to the next ECF- CISMA Workday!



The Crew (Left to right): Steven Troy, Chris O'Hara, Damion Keene, Mable O'Quinn, Bernadette Gallagher (kneeling), Mathew Martin, Mark Mercadante, Ken Burkett, Mike Renda, Kelli Gladding (kneeling), Ralph Lloyd & Don George



Powerline Easement and location of the majority of invasive plant species

# Florida Cooperative Invasive Species Management Area (CISMA) Monthly Call

– Hosted by the Florida Invasive Species Partnership (FISP)

*participation is voluntary, we promise it will only last 1 hour, and we can guarantee that you will enjoy the conversations*

4th Wednesday of every month at 1:30pm

## **April Call: Discussion of FLEPPC and FNPS conference**

FLEPPC panel discussion on Wednesday and lunch  
Think about what you want to talk about and don't forget to sign up for lunch (or bring your own)

FNPS training on Friday after lunch – confirm participation.  
We would like to have good CISMA representation so that we can have regional break-outs.

Florida Invasive Species Partnership ([www.FloridaInvasives.org](http://www.FloridaInvasives.org))