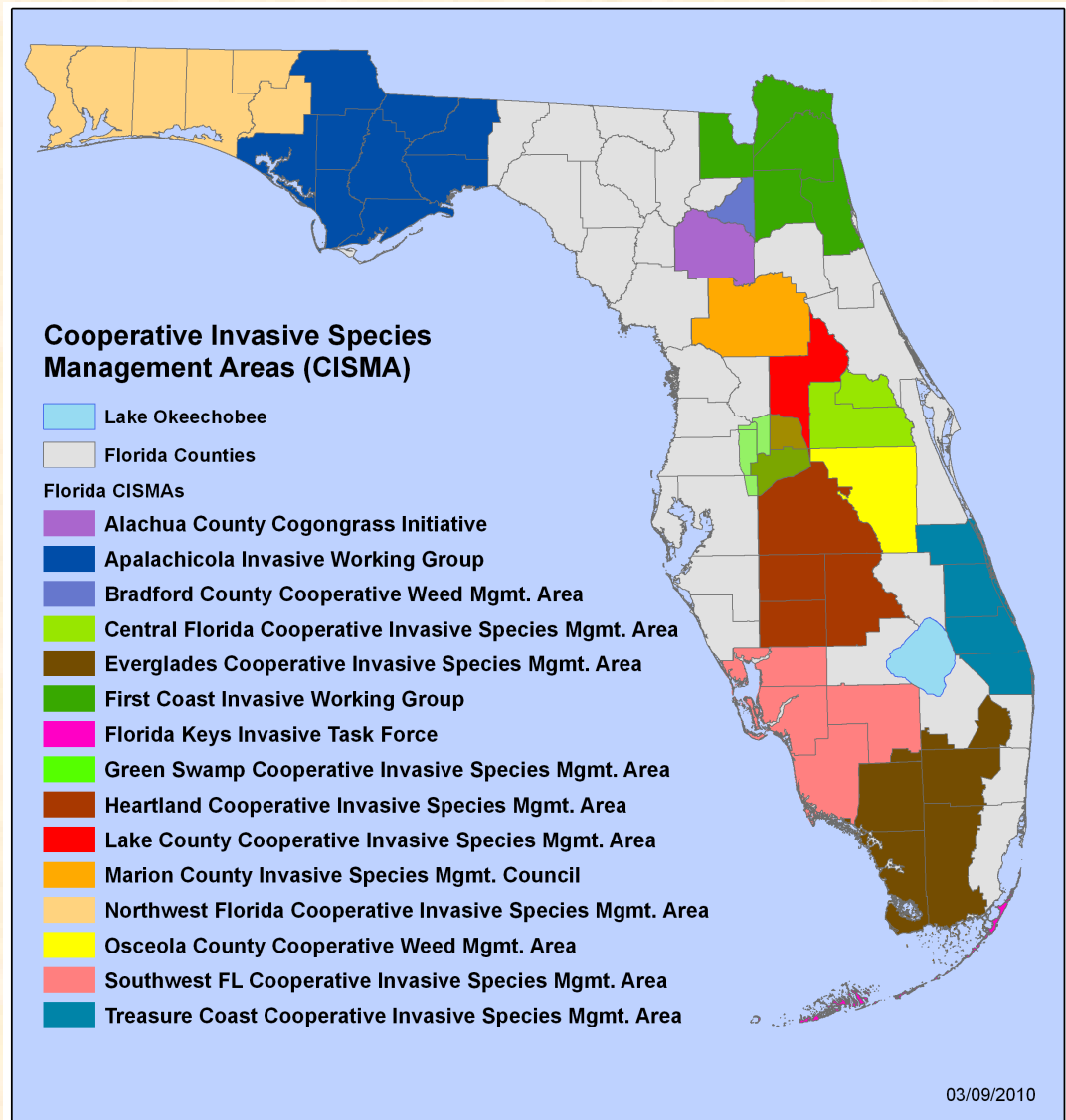


CISMA Call Agenda

- FISP Update (Kris)
- CISMA/CWMA Updates
 - Apalachicola
 - NW Florida
 - Bradford
- Wrap-up



Florida Invasive Species Partnership

Invasive species know no boundaries. If landowners and land managers in Florida wish to achieve long-term success with regards to combating invasive species, it is critical to collaborate with all stakeholders, focusing on prevention as well as treatment.

1) EDDMapS training & early detection workshops. Next steps:

- Send IveGot1 wallet cards to Florida CISMAs (done)
- Create short Early Detection/EDDMapS presentation for CISMAs to use when training their active detection networks (in progress – will be posted on FISP website)
- Create 1 page ‘cheat sheet’ for EDDMapS trainings for CISMAs to use when training their active detection networks (in progress – will be posted on FISP website)



www.IveGot1.org
is a partnership between the
Florida Invasive Species Partnership &
Florida Exotic Pest Plant Council
with support from
U.S. Fish and Wildlife Service,
National Park Service and
The Nature Conservancy
in cooperation with
Florida Fish & Wildlife Conservation
Commission and
Florida Natural Areas Inventory

Powered by
EDDMapS
Early Detection & Distribution Mapping System
at the Center for Invasive Species & Ecosystem Health
Photos by Pat Lynch, SFWMD and Peggy Greb, USDA ARS April 2010

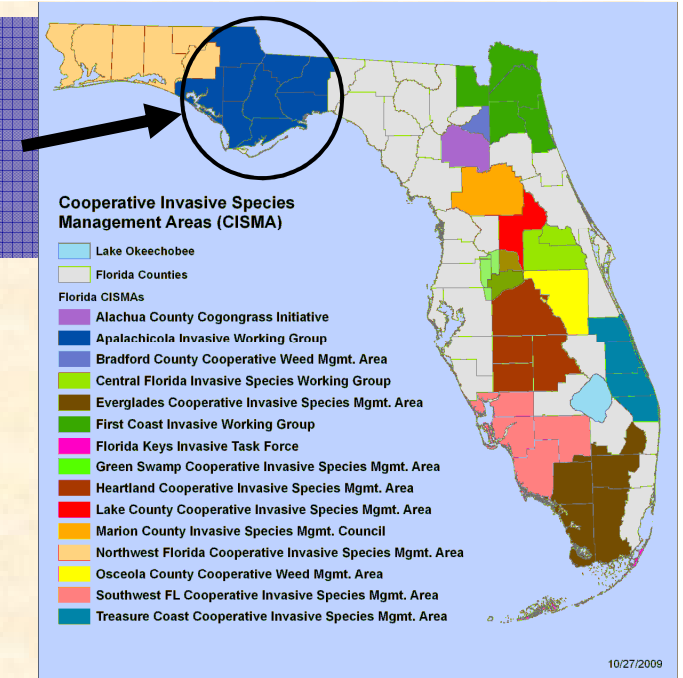
**Report Invasive
Plants and Animals
in Florida**

Report online at
www.IveGot1.org
or report animals to
1-888-Ive-Got1
(1-888-483-4681)

2) FISP Resolution posted: www.floridainvasives.org/resolution.html

Apalachicola Invasive Working Group (AIWG)

- Established in 2003 by stakeholders in the Apalachicola River watershed.
- Since 2003, AIWG has been awarded over \$150k from USFWS Partners for Fish & Wildlife Program and Florida Panhandle Coastal Program.
 - Funding primarily for managing invasive plants on private lands near conservation lands w/in watershed.
- In 2007, provided for CISMA management plan.
 - Current distribution of infestations, Region specific invasive data and Prioritize management
 - Extent of species
 - Impacts of species
 - Value of habitats
 - Reestablishment of species
- AIWG received \$40k for use in 2009 for 2 projects:
 - 110 acre parcel in Gulf County with Chinese tallow, Japanese climbing fern, and Cogongrass
 - 600 acre parcel in Gulf County with Chinese tallow, Japanese climbing fern, and wild taro
- AIWG received \$25k for use in 2010.



Apalachicola
Invasive Working Group



Invasive Exotic Plant Workshops

For more information please contact: Invasive Species Coordinator - Josh Spies

Phone: 850-643-2756 x208 Email: jspies@iwc.org <http://www.floridainvasives.org/Apalachicola/>



cogongrass



Japanese climbing fern



Chinese tallow tree

- ◆ Workshop admission is **FREE** and open to the public.
- ◆ Learn how to identify locally common invasive exotic plants and learn how to remove them from your property.
- ◆ Receive information about cost-share programs that can help eligible landowners remove these unwanted pests.
- ◆ Landowners with property near designated conservation land may be eligible for **FREE** invasive exotic plant removal.
- ◆ Pre-registration is requested. Please contact your preferred County Extension office to register.

Gulf County Extension

Phone: (850) 639-3200

April 12, 2010 6-8 pm Central

Honeyville Community Center

240 Honeyville Park Rd

Wewahatchee, FL 32465

Jackson County Extension

Phone: (850) 482-9620

April 13, 2010 6-8 pm Central

Agriculture Conference Center

2741 Pennsylvania Ave, Suite 3

Marianna, FL 32448

Liberty County Extension

Phone: (850) 643-2229

April 19, 2010 6-8 pm Eastern

Veteran's Memorial Civic Center

10405 NW Theo Jacobs Way

Bristol, FL 32321

Franklin County Extension

Phone: (850) 653-9337

April 20, 2010 6-8 pm Eastern

ANERR Nature Center

261 7th Street

Apalachicola, FL 32320



In April of 2010, AIWG hosted a series of invasive plant workshops.

- Created a comprehensive list of private landowners adjacent to conservation lands within Cisma boundary.
- Mailed over 2,000 flyers
- Websites, newspapers, TV, radio
- Hosted 4 workshops over 2 weeks with 7 presenters at each workshop
- 70 attendees total (averaging 18 per workshop)
- Focused on providing technical and financial assistance to private landowners.
- AIWG region specific invasive data and landowner assistance. e.g. NRCS EQIP & WHIP, FWC LAP, DOF Endangered and Threatened Plant Conservation Program
- IFAS Extension assistance with plant identification and control techniques.
- Public/Private interface
- FWC public lands working groups

Grant Opportunities



- National Fish and Wildlife Foundation - Pulling Together Initiative.
 - Potential source of funding for CISMA activities.
 - FWC, FNAI, and IFAS have all been identified as sources of match.
 - Other non-federal match? FNPS, BASF

Tyndall Air Force Base



- Department of Defense Legacy Program
 - Tyndall Air Force Base / Apalachicola Invasive Working Group (AIWG)
 - Phase II proposal: This landscape is part of an existing CISMA, Apalachicola Invasive Working Group (AIWG). This proposal will strengthen current activities and expand AIWG to include Tyndall Air Force Base as a partner. TNC will work with DoD and other AIWG partners to update the Invasive Non-Native Species Management Plan that was completed for this area in 2007. This update will also create a strategy to implement action items that forward the goals and objectives outlined in the plan.
 - Phase II Proposed Control Project: TNC NWFL staff will be used to protect high-quality natural areas on Tyndall AFB and other public managed lands within the 9 county CISMA from infestation by invasive species on nearby private lands.

My Contact Info

Josh Spies

Invasive Species Coordinator
Apalachicola National Forest &
The Nature Conservancy
Northwest Florida Program

850-643-2756 x208

jspies@tnc.org



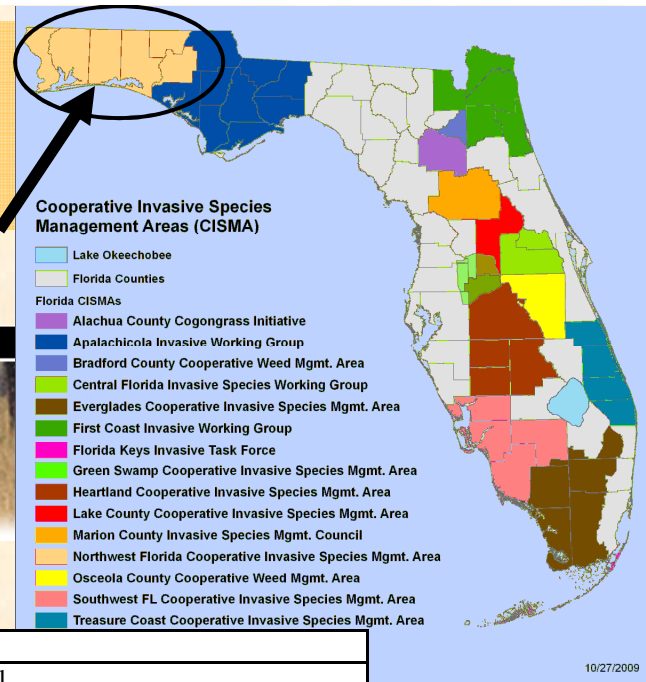
Northwest Florida Six Rivers CISMA

- Used GCPEP as a foundation for CISMA



Gulf Coast Plain Ecosystem Partnership

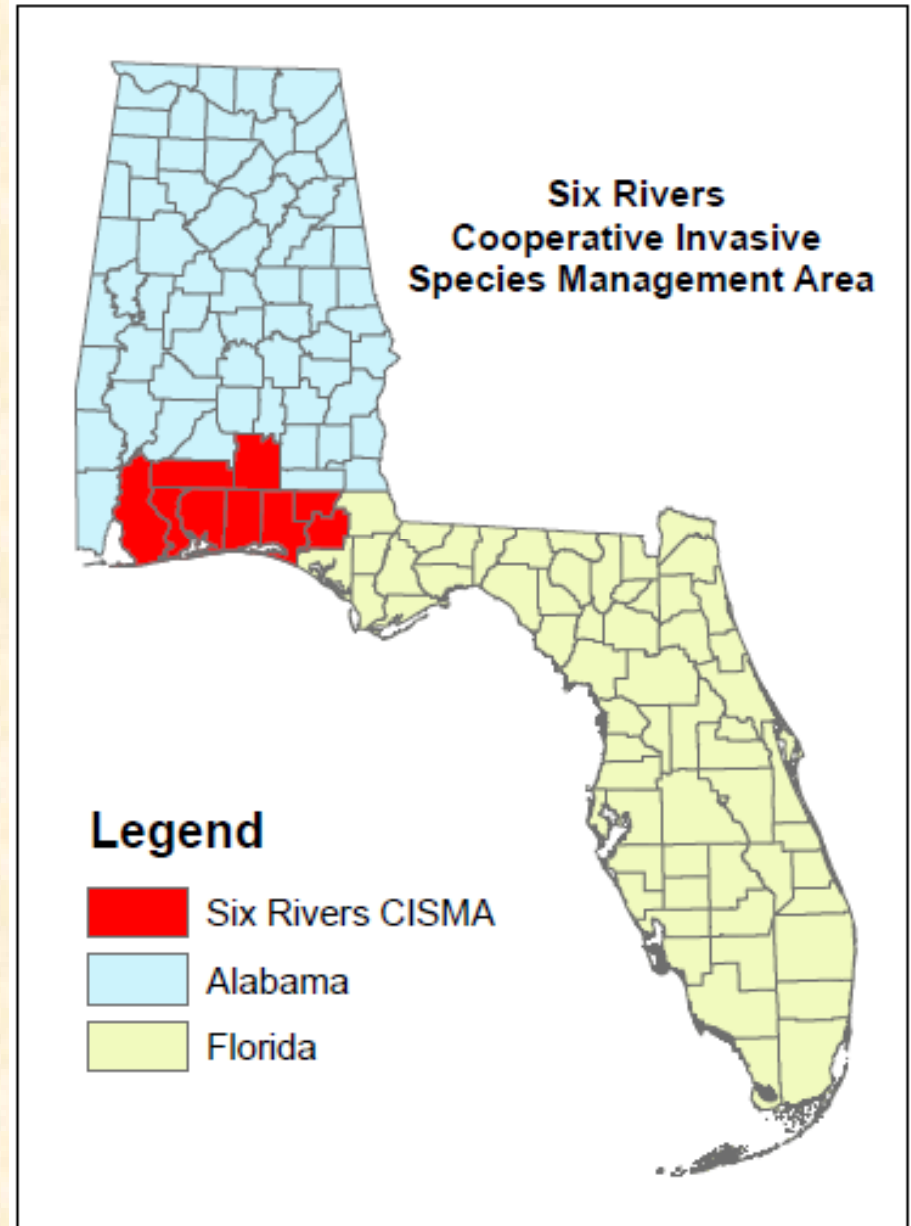
- 3 meetings to date, 47 attendees representing 25 agencies



3-Rivers RC&D
Bay Area Resource Council
Blackwater River Foundation
Chelco
Choctawhatchee Basin Alliance
Division of Forestry
Eglin Air Force Base
Escambia County
Florida Department of Environmental Protection
Florida Division of Transportation
Florida Fish and Wildlife Conservation Commission
Florida Natural Areas Inventory
Hurlburt Field (Air Force)
National Park Service
Navy
North West Florida Water Management District
Okaloosa County
Progressive Solutions
The Longleaf Alliance
The Nature Conservancy
United States Forest Service
University of Florida
University of West Florida
USDA-NRCS Crestview
Walton County

Northwest Florida Six Rivers CISMA

- Expanded from 4, to 6, to 9 counties (FL: Escambia, Santa Rosa, Okaloosa, Walton, Holmes, Washington; AL: Baldwin, Escambia, Covington) – see map on next slide
- 2nd meeting overruled “size” decision made at 1st meeting
- Adopted 5-year Strategic Plan
- Established steering committee and subcommittees addressing strategic plan’s goals
- Completed 1 month of invasives treatment along fencelines on Eglin AFB.
- Next step: develop an annual work plan
- How do we keep the momentum with uncertain funding?



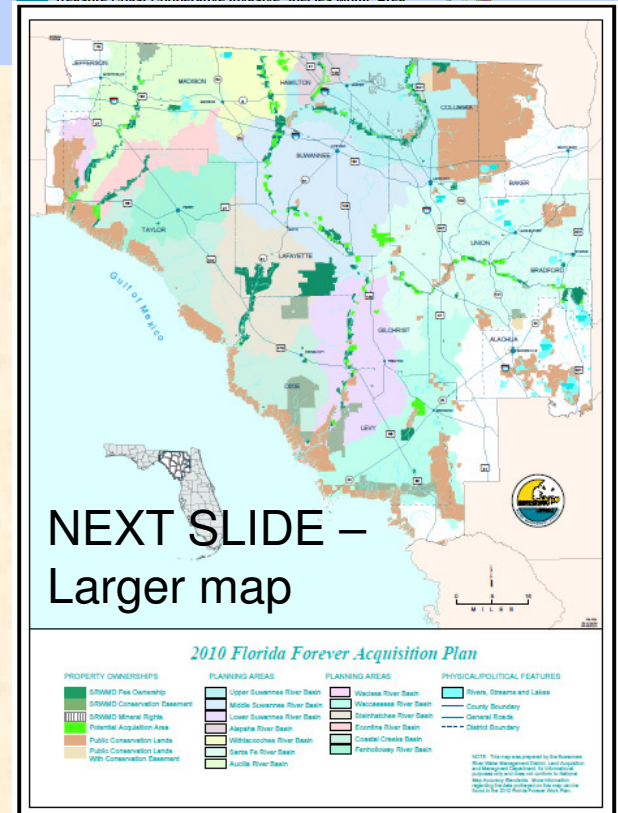
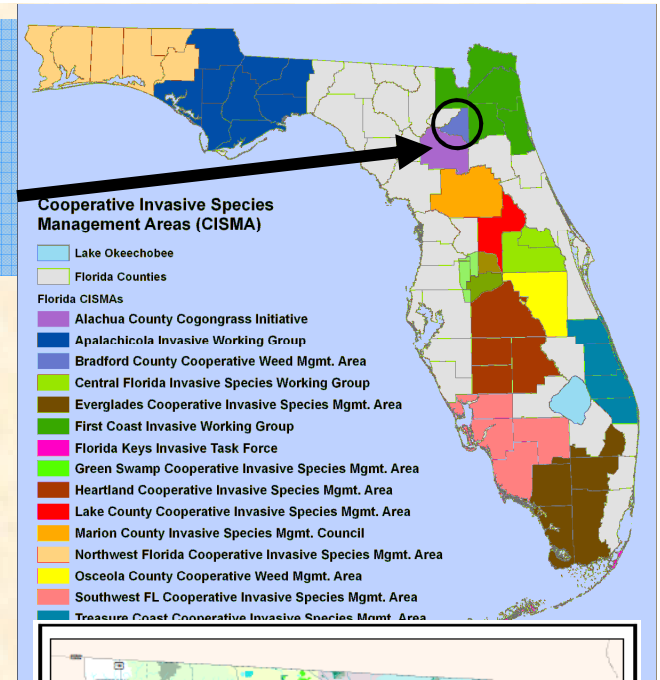
Bradford Co. Cooperative Weed Management Area

The plan is to do a PTI preproposal that would include forming a CISMA for the area covered by the Suwannee River Water Management District (SRWMD).

CISMAs that could be affected: Bradford, Apalachicola, First Coast, Marion, and Alachua.

Questions:

1. Does it work to have overlapping CISMAs? How is the Green Swamp model working?
2. Is a SRWMD CISMA too big to work?
3. Should a county be split between 2 CISMAs?
4. Would it work to have a large CISMA that would be divided up into smaller areas for planning and implementation?





Florida Cooperative Invasive Species Management Area (CISMA) Monthly Call

– Hosted by the Florida Invasive Species Partnership (FISP)

participation is voluntary, we promise it will only last 1 hour, and we can guarantee that you will enjoy the conversations

4th Wednesday of every month at 1:30pm

email kserbesoffking@tnc.org for more information or go to floridainvasives.org to join up for list serve announcements

Participate online

and/or

Participate by phone

go to: nethope.webex.com

US Toll-free: 1-866-699-3239

Enter meeting number: 829 485 191

Participant Passcode: 20097469

Enter meeting password: invasive1

Florida Invasive Species Partnership (www.FloridaInvasives.org)