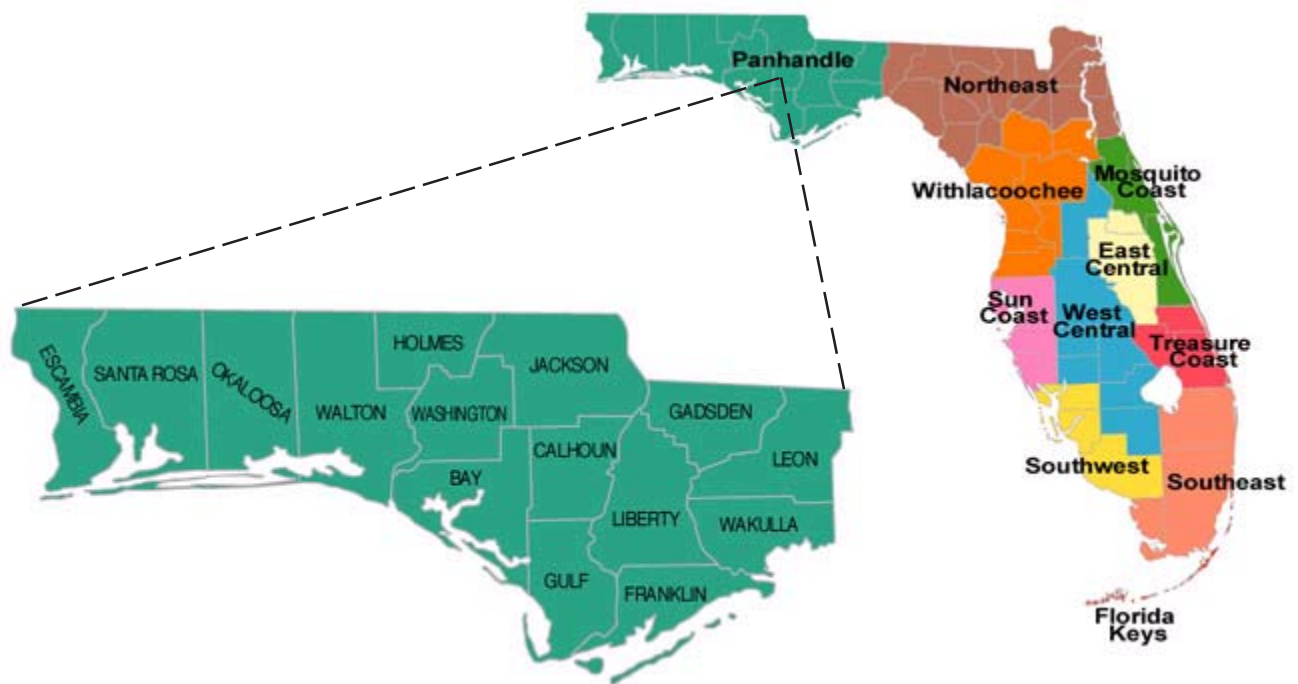


Panhandle Regional Working Group



The Panhandle Regional Working Group liaison is J.J. Bachant, The Nature Conservancy, 4025 Hwy 178, Jay, Florida 32565, phone: 850-675-2884, fax: 850-675-5759, e-mail: jbachant@tnc.org

Eglin Air Force Base

County: Okaloosa

PCL Size: 463,448 acres

Project ID: PH-026 30 acres \$14,945.93

Project Manager: Eglin AFB Natural Resources

Dennis Teague, Endangered Species Biologist

Jackson Guard, 107 Hwy 85 N, Niceville, Florida 32578

Phone: 850-883-1155, Fax: 850-882-5321

E-mail: dennis.teague@eglin.af.mil

Eglin Air Force Base is the largest forested military reservation in the United States. In addition to a large expanse of sandhill, there are 34 other natural communities present, including the most significant array of steephead seepage streams under a single ownership in Florida. A suite of rare and sensitive plants in this area benefit from removal of invasive exotic species, including 67 rare plants and 36 federally or state listed animal species. The project area consisted of three control sites, described below. The USAF provided \$10,000 in matching funds beyond the project cost, and also provided in-kind services by treating approximately 2 acres of cogon grass and torpedo grass at the Barrier Island parcel, and 3 acres of cogon grass at the Hurlburt Archery Range parcel.

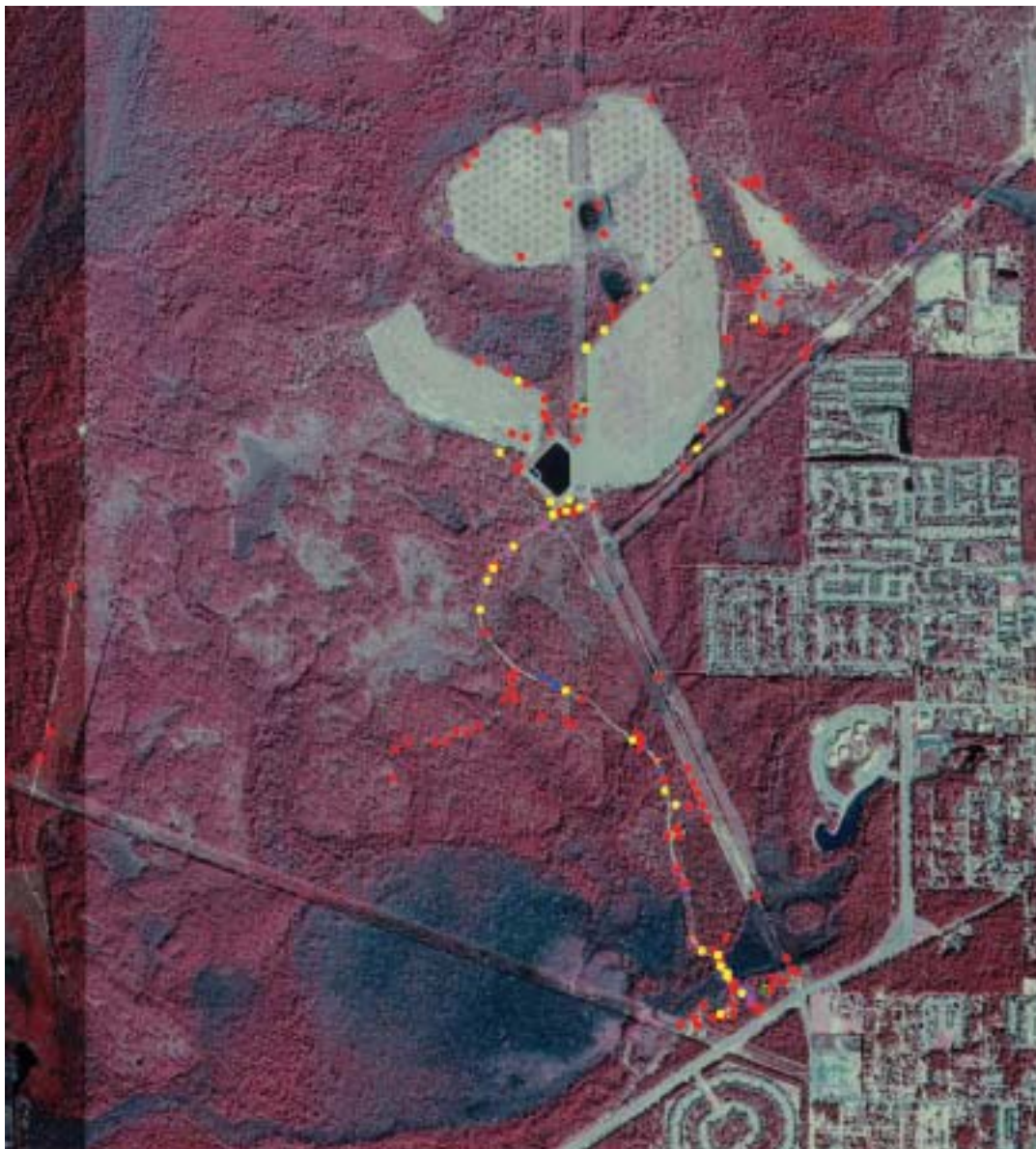
Santa Rosa Island Parcel: This 4-mile section is high quality barrier island habitat containing coastal dunes, interdunal coastal swales, flatwoods, and coastal grasslands. The same coastal interdunal swale habitat where Chinese tallow was established lay immediately adjacent to habitat that supports *Cladonia perforata*, a federally listed endangered lichen, and two state listed endangered asters, Cruise's golden aster (*Chrysopsis cruiseana*), and Godfrey's golden-aster (*Chrysopsis godfreyi*). Control efforts will benefit many other sensitive species, including the Santa Rosa beach mouse (*Peromyscus polionotus leucocephalus*). The average cover of Chinese tallow was 50% of 8 acres with densities light across the landscape but moderate where clustered.

Hurlburt Archery Range Road/Whiskey Head Dove Field: This area is high quality flatwoods habitat interspersed with depression marshes and dome swamps. The area contains known breeding habitat for the federally threatened flatwoods salamander (*Ambystoma cingulatum*). Chinese tallow trees were found adjacent to salamander breeding ponds. Invasive species were associated with, roads, wetlands, and disturbed areas. The target species were Chinese tallow, Japanese climbing fern, and Chinese privet. The average coverage of Chinese tallow was 75% for 10 acres of area where tallow was established. Fifteen small to medium size (less than 1000 ft² each) areas of Japanese climbing fern were identified, along with numerous occurrences of Chinese privet.

Piney Creek Urban Interface: This area supports many exemplary natural communities including upland hardwood forests, xeric hammocks, baygalls, and seepage streams. Rare plants found here include but are not limited to; the Alabama spiny pod (*Matelea alabamensis*), Arkansas oak (*Quercus arkansana*), silky camelilia (*Stewartia malacodendron*), Baltzell's sedge (*Carex balzelli*), sandhill sedge (*Carex tenax*), pinesap (*Monotropa hypopithys*), large leafed jointweed (*Polygonella macrophylla*) and spoon flower (*Peltandra sagittifolia*). Invasive species were associated with roads, the Choctaw Beach urban interface, and areas of illegal dumping. The target species were Chinese tallow, with an average cover of 50% on 3 acres, and mimosa, with coverage of 50% on 4 acres.

Eglin Air Force Base

Target Plants	Common Name	FLEPPC Rank	Treatment	Herbicide
<i>Albizia julibrissin</i>	mimosa	Category I	basal	Garlon 4
<i>Ligustrum sinense</i>	Chinese privet	Category I	basal	Garlon 4
<i>Lonicera japonica</i>	Japanese honeysuckle	Category I	girdle	Garlon 4
<i>Sapium sebiferum</i>	Chinese tallow	Category I	basal	Garlon 4



Invasive plant coordinates are recorded in the field with handheld GPS units. The data is then used to produce GIS maps that graphically depict the location of alien invaders. The red dots above are Chinese tallow trees.

Eglin Air Force Base



Florida's natural pine forests have an open understory. Invasive trees and shrubs crowd out native understory species, as well as alter fire behavior, which threatens the pines themselves.

You can't see the forest for the trees, when invasives move in (above). But after a successful control operation (right), the forest is on its way to recovery.



Apalachicola River Water Management Area

County: Gulf

PCL Size: 35,506 acres

Project ID: PH-025 200 acres \$64,204.81

Project Manager: U.S. Forest Service (USDA)

Louise Kirn, District Ecologist

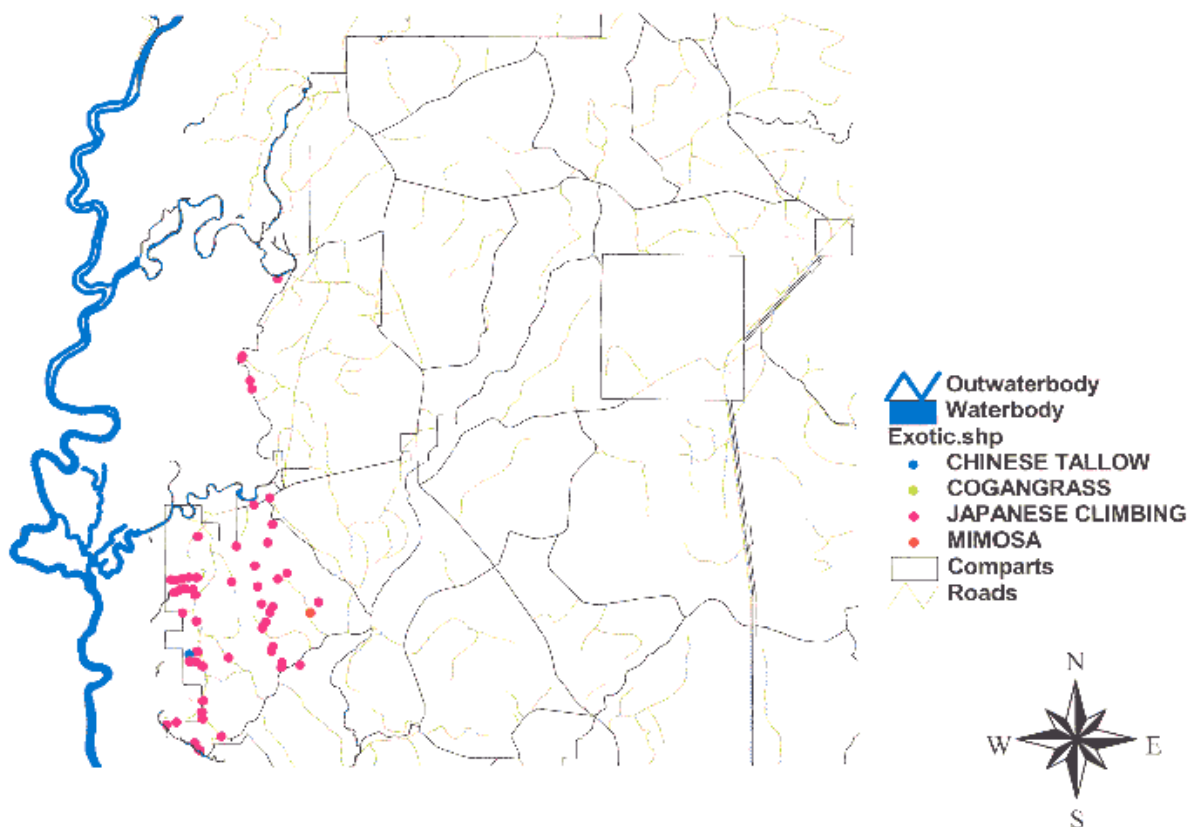
P.O. Box 579, Bristol, Florida 32321

Phone: 850-643-2282, Fax: 850-643-2284

E-mail: lkirn@fs.fed.us

The Florida River Island tract is an inholding within the Apalachicola National Forest owned by the Northwest Florida Water Management District. Japanese climbing fern in the National Forest occurs predominately in bottomland hardwoods (floodplain edge), slope forests, and adjacent pine flatwoods. The vertical distribution ranges from plants a few feet tall to those overtopping the subcanopy and canopy. In the project area, climbing fern varied in density from relatively continuous coverage along the floodplain boundary and slope forests to small isolated patches scattered across several acres of mesic pine flatwoods. The NFWFMD and USFS had cooperatively treated adjacent infestations on one previous occasion.

Target Plants	Common Name	FLEPPC Rank	Treatment	Herbicide
<i>Albizia julibrissin</i>	mimosa	Category I	basal	Garlon 4
<i>Lygodium japonicum</i>	Japanese climbing fern	Category I	foliar	Roundup+Escort
<i>Nandina domestica</i>	heavenly bamboo	Category I	basal	Garlon4
<i>Aleurites fordii</i>	tung oil tree	Category II	basal	Garlon 4



Blackwater River State Forest

County: Okaloosa, Santa Rosa

PCL Size: 189,594 acres

Project ID: PH-028 108 acres \$29,316

Project Manager: Florida Division of Forestry (DACS)

Tom Cathey, Senior Forester

11650 Munson Highway, Milton, Florida 32570

Phone: 850-957-6140, Fax: 850-957-6143

E-mail: cathey@doacs.state.fl.us

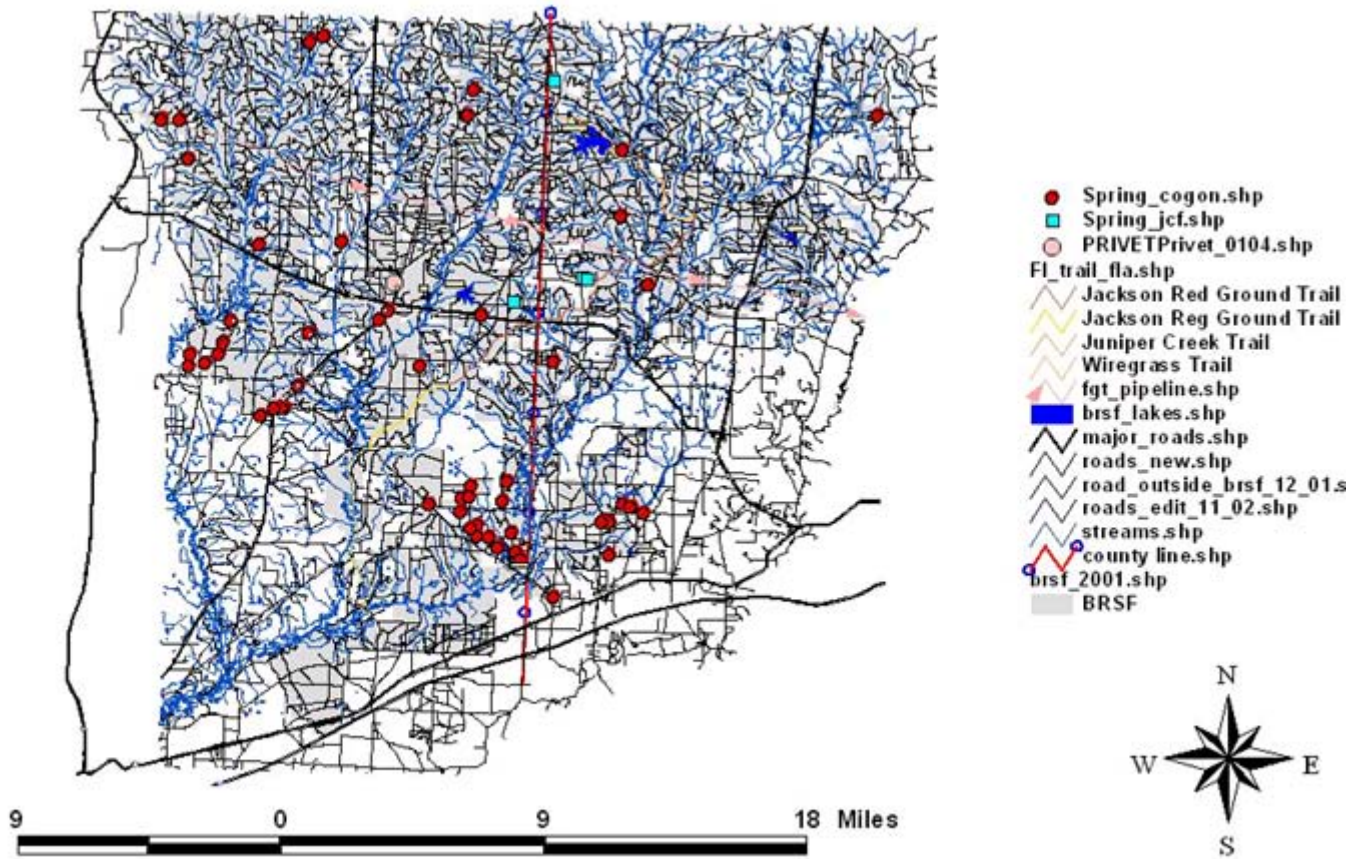
Named for the Blackwater River, which runs through the forest for approximately 30 miles, the Blackwater River State Forest (BRSF) is the second largest state forest in Florida. The Blackwater River is one of the last remaining shifting sand bottom streams still in its natural state for almost its entire length. The DOF acquired the BRSF in 1955 from the US Forest Service.

Current management emphasis is on cogon grass, which DOF believes to be the leading threat to natural ecosystems on BRSF. DOF has periodically treated the worst known infestations since the mid-1990s. During the fall of 2002 and spring of 2003, BIPM contractors treated 68 cogon grass sites, in addition to treating privet, kudzu, Chinese tallow, and mimosa.

The current project controlled cogon grass on 58 sites totaling approximately 15 acres. Infestations ranged from 100 square feet to more than 1.5 acres with an average ninety percent coverage. Chinese privet was treated in a cutover pine stand that was originally treated with Velpar ULW at 2lbs/acre and then planted with longleaf tubelings. The total infested area was 72 acres in size, but only the infestation on the perimeter of the unit (approximately 6 acres with ninety percent coverage) was treated by the contractor. A second dose of Velpar ULW provided by BIPM was aerially applied to the interior of the stand by the BRSF Timber Management Team. Japanese climbing fern found mixed in with the privet was also treated. Three infestations of climbing fern totaling 60 acres with five percent coverage were controlled by the contractor. Two small sites were also treated; a one-acre borrow pit with seven percent coverage of mimosa, and a one-acre clay pit with fifteen percent coverage of tallow.

Target Plants	Common Name	FLEPPC Rank	Treatment	Herbicide
<i>Imperata cylindrica</i>	cogon grass	Category I	foliar	Razor+Arsenal
<i>Ligustrum sinense</i>	Chinese privet	Category I	foliar	Razor+Arsenal
<i>Lygodium japonicum</i>	Japanese climbing fern	Category I	foliar	Razor+Arsenal

Blackwater River State Forest



A GIS map shows the location of cogon grass (red dots), Japanese climbing fern (blue squares), and Chinese privet (pink dots) within the project area.

Blackwater River State Park and Heritage Trail

County: Santa Rosa

PCL Size: 712 acres

Project ID: PH-027 24.57 acres \$44,142.62

Project Manager: Florida Park Service (DEP)

Robert Barlow, Park Manager

7720 Deaton Bridge Road, Holt, Florida 32564

Phone: 850-983-5363, Fax: 850-983-5364

E-mail: robert.barlow@dep.state.fl.us

Blackwater River State Park consists of mesic flatwoods, sandhill, upland pine forest, baygall, and river floodplain communities. Exotics occurred in the campground, residence area, and near the ranger station, along roadsides, fence lines, and in a few scattered areas of the park. Blackwater Heritage Trail State Park is a paved path 12 feet wide within an approximately 100-foot corridor that stretches 8.5 miles in length. The trailhead is located in the town of Milton. Yards, cultivated areas, pine plantations, exotic hedgerows, and shade trees border the trail. Exotics occurred in almost all areas of the trail.

Target Plants	Common Name	FLEPPC Rank	Treatment	Herbicide
<i>Albizia julibrissin</i>	mimosa	Category I	basal	Garlon 4
<i>Cinnamomum camphora</i>	camphor tree	Category I	basal	Garlon 4
<i>Colocasia esculenta</i>	wild taro	Category I	foliar	Rodeo
<i>Imperata cylindrica</i>	cogon grass	Category I	foliar	Roundup+Escort
<i>Lantana camara</i>	lantana	Category I	basal	Garlon 4
<i>Ligustrum sinense</i>	Chinese privet	Category I	basal	Garlon 4
<i>Lonicera japonica</i>	Japanese honeysuckle	Category I	girdle	Garlon 4
<i>Lonicera japonica</i>	Japanese honeysuckle	Category I	foliar	Rodeo/Garlon 3A
<i>Lygodium japonicum</i>	Japanese climbing fern	Category I	foliar	Roundup+Escort
<i>Melia azedarach</i>	Chinaberry	Category I	basal	Garlon 4
<i>Nandina domestica</i>	nandina	Category I	basal	Garlon 4
<i>Neyraudia reynaudiana</i>	cane grass	Category I	foliar	Roundup+Escort
<i>Sapium sebiferum</i>	Chinese tallow	Category I	basal	Garlon 4
<i>Wisteria sinensis</i>	Chinese wisteria	Category II	girdle	Garlon 4

Lake Jackson Mounds State Archeological Site

County: Leon

PCL Size: 198 acres

Project ID: PH-029 120 acres \$13,400

Project Manager: Florida Park Service (DEP)

Wes Smith, Park Manager

1022 De Soto Park Drive, Tallahassee, FL 32301

Phone: 850-922-6007, Fax: 850-488-0366

E-mail: wes.smith@dep.state.fl.us

This park unit consists of secondary growth hammock, ravines, and upland hardwood forest. Coral ardisia was a widely spread exotic species at the park, with dense stands found throughout the western portion of the unit, especially adjacent to the nature trails and seepage streams. Nandina was abundant in the same locations as ardisia. Stem counts of these two exotics were as high as several thousand per acre in some locations. These exotic species were of particular concern in the lowland ravine areas where they threatened native trilliums. Chinese tallow was well established in dense stands along the unit's southeast and northeast borders and along the entire lakeshore. Tallow stem counts approached several hundred per acre in some areas.

Target Plants	Common Name	FLEPPC Rank	Treatment	Herbicide
<i>Albizia julibrissin</i>	mimosa	Category I	basal	Garlon 4
<i>Ardisia crenata</i>	coral ardisia	Category I	basal	Garlon 4
<i>Cinnamomum camphora</i>	camphor tree	Category I	basal	Garlon 4
<i>Melia azedarach</i>	Chinaberry	Category I	basal	Garlon 4
<i>Nandina domestica</i>	heavenly bamboo	Category I	basal	Garlon 4
<i>Sapium sebiferum</i>	Chinese tallow	Category I	basal	Garlon 4
<i>Aleurites fordii</i>	tung oil tree	Category II	basal	Garlon 4

Aerial view of project area and primary invasive plant concentrations.



Panhandle Roving Control Technicians

County: various

PCL Size: n/a

Project ID: PH-024 157 acres Project Cost: \$19,679.06

Project Manager: Bureau of Invasive Plant Management (DEP)

Mark Zeller

3900 Commonwealth Boulevard, Tallahassee, Florida 32399

Phone: 850-245-2809, Fax: 850-245-2835

E-mail: mark.zeller@dep.state.fl.us

Two invasive plant control technicians funded by BIPM performed control work on public conservation lands in north Florida. This included both initial and maintenance control work. Sites included Blackwater River and Topsail Hill Preserve State Parks, Blackwater River and Pine Log State Forests, Lake Jackson Mounds State Archaeological Site, St. Joe Bay State Buffer Preserve, St. Marks National Wildlife Refuge, Eglin Air Force Base, and Leon County's Miccosukee Greenway and Phipps Park. BIPM also provided all herbicide through its Herbicide Bank.

Target Plants	Common Name	FLEPPC Rank	Treatment	Herbicide
<i>Sapium sebiferum</i>	Chinese tallow	Category I	basal	Garlon 4
<i>Melia azedarach</i>	Chinaberry	Category I	basal	Garlon 4
<i>Albizia julibrissin</i>	mimosa	Category I	basal	Garlon 4
<i>Ligustrum</i> spp.	privet	Category I	basal	Garlon 4
<i>Imperata cylindrica</i>	cogon grass	Category I	foliar	Roundup+Arsenal
<i>Lygodium japonicum</i>	Japanese climbing fern	Category I	foliar	Roundup+Arsenal
<i>Lonicera japonica</i>	Japanese honeysuckle	Category I	foliar	Roundup+Arsenal